

14 SECTION
SCALE: 3/4"=1'-0"

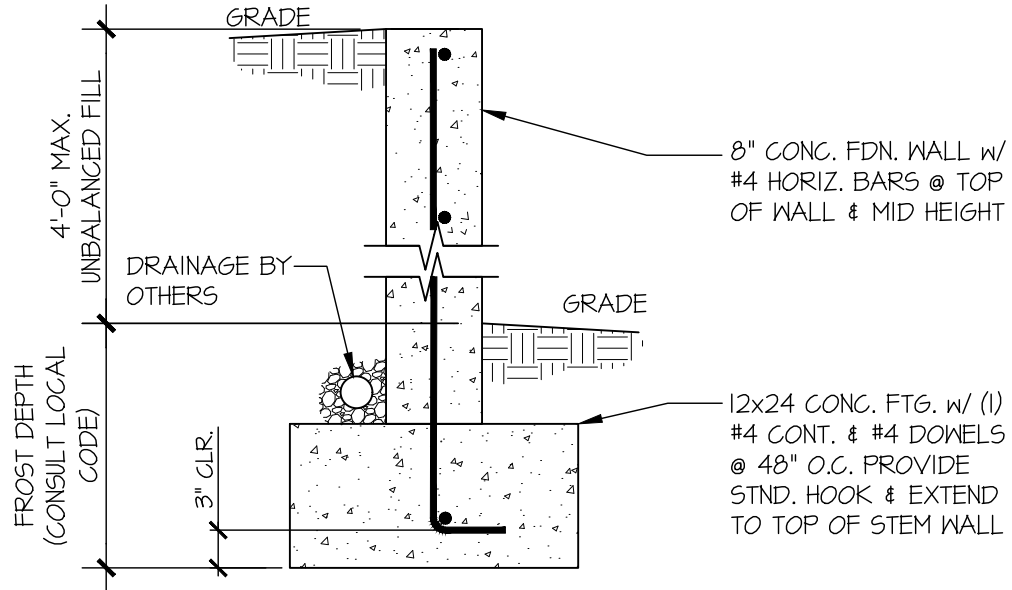


MULHERN+KULP
RESIDENTIAL STRUCTURAL ENGINEERING

7220 Trade Street, Suite 295, San Diego, CA 92121
p 619-650-0010 > mulhernkulp.com

ARCH. INNOVATIONS
3036 67TH AVE. SE
MERCER ISLAND, WA

Mulhern+Kulp project number:	203-22010
project mgr:	NJM
drawn by:	LGH
issue date:	06/25/2025
sketch no.:	SK-1



15 SECTION
 SCALE: 3/4"=1'-0"



MULHERN+KULP
 RESIDENTIAL STRUCTURAL ENGINEERING

7220 Trade Street, Suite 295, San Diego, CA 92121
 p 619-650-0010 > mulhernkulp.com

ARCH. INNOVATIONS
 3036 67TH AVE. SE
 MERCER ISLAND, WA

Mulhern+Kulp project number:	203-22010
project mgr:	NJM
drawn by:	LGH
issue date:	06/25/2025
sketch no.:	SK-2